

Program Highlights

- Group education
- Peer support
- School and community based case management services aimed at linking youth and their family to effective resources in the community
- Spiritual Resource Linkages
- Year Round Programming
- Parents Support Group/Education Program



- Identify risk factors
- Improve school attendance
- Reduce school failure
- Reduce child/parent Stressed Relationship
- Reduce overall daily community risk associated with the unmet needs of youth

Changing the Fate of Our Youth By:

- ⇒ Providing them the opportunity to participate in educational, recreational and cultural enrichment programs
- ⇒ Providing an eight week Summer Youth Leadership Development Camp designed to enhance positive character development of our youth
- ⇒ Providing Skill Building Programming to teach our youth the necessary life skills needed to be a successful student and a responsible citizen in their community
- ⇒ Non-traditional approaches to youth and family interventions that places the youth and the family in the center of all services to be delivered

PROJECT LIVE: Pilot Project Schools

Northwest Middle School

West Middle School

Contact Person: Regina Singleton LMSW

Youth Intervention Specialist

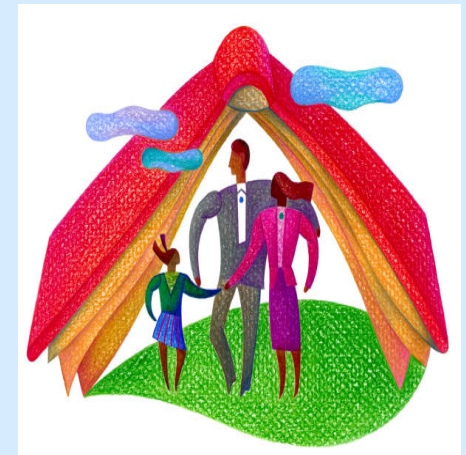
Friends of Yates Incorporated

913-321-1566



PROJECT LIVE

A School Based Community Prevention and Intervention Project



**1418 Garfield
913-321-1566
913-321-1569 (Fax)**

PROJECT LIVE: Embracing our Youth and their Families

Project LIVE endeavors to focus on youth in the Middle School Setting that have been identified as “at risk” due to a variety of factors including:

- Exposure to some form of violence/trauma
- At risk of being victimized by or perpetrating violence
- Has demonstrated school behavior problems with social, behavioral and emotional adjustment in the school setting
- Has family problems that impact the students ability to adjust to the school setting and excel academically



Project Live purpose will be to:

- Reduce the incidence and severity of undiagnosed mental health conditions
- Reduce the incidents of violence related to post traumatic stress disorder
- Improve the social, coping and anger management skills of high risk youth and parents
- Reduce selected risk factors and increase protective factors linked to violence, substance abuse and related harms
- Link youth and families with supports and resources necessary to address current or potential social and emotional adjustment problems
- Increase awareness of mental health issues
- Improve the likelihood that interventive help will be sought early within the family system

Collaborative Partnerships: Project Live has worked and continues to work to develop collaborative working relationships with key agencies and organizations within the Community in order to assure the success of this program intervention. School District 500, local churches and religious leaders, Wyandot Center are a few of those partnerships.

Sponsored: Project Live is sponsored by Friends of Yates Incorporated. Yates Center has served the community for 95 years and continues to develop program and services to support the Northeast Community of Kansas City, Kansas. Friends of Yates has a number of different services however our signature program is the Della Gill/Joyce H. Williams Center for Battered Women and their Children.

Our Mission: To change the fate of African American and at risk Youth in the Kansas City, Kansas Community from one of hopelessness and despair to one of vitality and life: Project LIVE

Funding: PROJECT LIVE is funded through the Greater Kansas City Health Care Foundation. It is a 3 year Grant Program. However Friends of Yates is looking for continual funding sources and self reliant funding in order to maintain this program in the community and expand the program to other middle schools and elementary schools within the District.

Contact Person: Regina Singleton LMSW 321-1566